

B.R. PRECISION TURBO HYDRO MACHINE VICE



Model Type: BR-TURBO-100-160



Trouble Free Performance

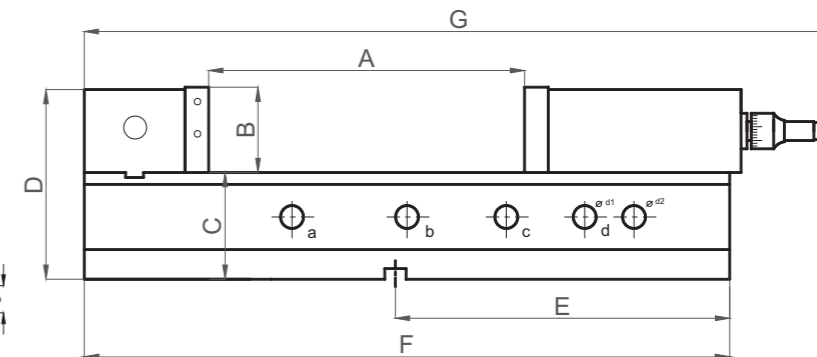
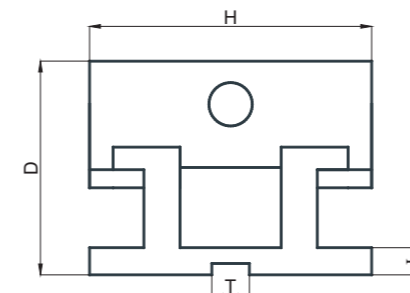
Hydraulically Operated



Descriptions & Operation

B.R. Turbo Hydro M/c vice: Hydro-Booster System for maximum clamping pressure with minimum force. Sliding bed ways flame hardened and ground, compact design. Great clamping capacity. Light & smooth operation. High Deflection/Bending Resistant, Constructed for machining centre, Milling, Drilling, and Many other machine shop applications.

B.R. TURBO HYDRAULIC MACHINE VICES



Model Types. & Dimensions

Specification	Model Type BR-TURBO-100	Model Type BR-TURBO-160
	↓	↓
Width of jaws (H)	100 mm	160 mm
Depth of jaws (B)	40 mm	55 mm
Max. Jaw opening range (A)	200 mm	300 mm
Work face Height (C)	70 mm	95 mm
Position No I (a) $\varnothing d1 - \varnothing d2$	d1: 2 - 30mm d2: 0 - 3mm	d1:13 - 70mm d2: 0 - 30mm
Position No II (b) $\varnothing d1 - \varnothing d2$	d1: 55 - 90mm d2: 25 - 60mm	d1:90 - 150mm d2: 50 - 110mm
Position No III (c) $\varnothing d1 - \varnothing d2$	d2: 115 - 145mm d2: 85 - 115mm	d1:170 - 230mm d2: 130 - 190mm
Position No IV (d) $\varnothing d1 - \varnothing d2$	d2: 170 - 205mm d2: 145 - 175mm	d1:250 - 310mm d2: 210 - 270mm
Maximum Length of Base with Lever (G)	465 mm	685 mm
Overall width of base (H)	100 mm	160 mm
length of Base (F)	385 mm	565 mm
'L' Clamping Base Height (I)	16 mm	18 mm
Clamping force	2000 Kgs	4000 Kgs
Overall height (D)	110 mm	110 mm
Tenon slot size	14 mm	14 mm
Tenon Slot to Base end (E)	225 mm	340 mm
Total weight (App)	20 Kg	60 Kg

Hydraulically Operated



Manufacturer:
Sales Office : # 19, TVS CROSS, PEENYA INDUSTRIAL ESTATE I STAGE, BANGALORE - 560 058, INDIA
MOB: +91 98452 08854, 094496 48171, 099726 37475, 08722472132
E-mail Id: brvices@rediffmail.com, brprecisions@gmail.com



Visit us at: www.brprecision.com, www.brvice.com

Warranty: One year conditional warranty on manufacturing defects